

HCS-3900 Series Economical Digital Conference System

HCS-3938 Series Conference Units	6.5
HCS-3938C_S Economical Digital Conference System Chairman Unit (tabletop, champagne panel + black base, white button).....	6.5
HCS-3938C_L Economical Digital Conference System Chairman Unit (tabletop, champagne panel + black base, champagne button).....	6.5
HCS-3938C_G Economical Digital Conference System Chairman Unit (tabletop, charcoal gray panel + black base, green button).....	6.5
HCS-3938C_D Economical Digital Conference System Chairman Unit (tabletop, charcoal gray panel + black base, charcoal gray button).....	6.5
HCS-3938CF_S Economical Digital Conference System Chairman Unit (tabletop, champagne panel + black base, white button, fixed gooseneck).....	6.7
HCS-3938CF_L Economical Digital Conference System Chairman Unit (tabletop, champagne panel + black base, champagne button, fixed gooseneck).....	6.7
HCS-3938CF_G Economical Digital Conference System Chairman Unit (tabletop, charcoal gray panel + black base, green button, fixed gooseneck).....	6.7
HCS-3938CF_D Economical Digital Conference System Chairman Unit (tabletop, charcoal gray panel + black base, charcoal gray button, fixed gooseneck).....	6.7
HCS-3938D_S Economical Digital Conference System Delegate Unit (tabletop, champagne panel + black base, white button).....	6.9
HCS-3938D_L Economical Digital Conference System Delegate Unit (tabletop, champagne panel + black base, champagne button).....	6.9
HCS-3938D_G Economical Digital Conference System Delegate Unit (tabletop, charcoal gray panel + black base, green button).....	6.9
HCS-3938D_D Economical Digital Conference System Delegate Unit (tabletop, charcoal gray panel + black base, charcoal gray button).....	6.9
HCS-3938DF_S Economical Digital Conference System Delegate Unit (tabletop, champagne panel + black base, white button, fixed gooseneck).....	6.11
HCS-3938DF_L Economical Digital Conference System Delegate Unit (tabletop, champagne panel + black base, champagne button, fixed gooseneck).....	6.11
HCS-3938DF_G Economical Digital Conference System Delegate Unit (tabletop, charcoal gray panel + black base, green button, fixed gooseneck).....	6.11
HCS-3938DF_D Economical Digital Conference System Delegate Unit (tabletop, charcoal gray panel + black base, charcoal gray button, fixed gooseneck).....	6.11
HCS-3900M Series Economical Digital Conference System Main Units	6.45
HCS-3900MA Economical Digital Conference System Main Unit (discussion, recording, 256×64 OLED, 6P sockets).....	6.45
HCS-3900MB Economical Digital Conference System Main Unit (discussion, 256×64 OLED, 6P sockets).....	6.47
HCS-3900ME Economical Digital Conference System Extension Unit (6P sockets)	6.50

HCS-3938C Chairman Unit



Features

- Stylish and ergonomic design
- Smaller, economical and practical, convenient for transportation
- Connection cable is routed from the bottom through the hole in the table for a tidy desktop
- Fully digital audio technology
- Hi-Fi loudspeaker
- Priority key and Next key
- Pluggable stem microphone
- Excellent immunity to RF interference from mobile phones
- Supporting “PnP” (plug and play)

The stylish and ergonomically designed chairman unit has all the necessary facilities to enable the user to chair a conference. It has excellent immunity to RF interference from mobile phones. Similar in appearance to HCS-3938D Delegate Unit, the HCS-3938C Chairman Unit includes a microphone priority button. When pressed, the priority button causes all currently active delegate microphones to be switched off temporarily or permanently, allowing the chairman to take control of the meeting. The loudspeaker offers superior acoustics with minimal feedback for enhanced intelligibility.

Functions

- Compliant to IEC 60914
- Gain of each microphone adjustable separately, fitting the individual orator’s voice to achieve perfect speech pickup any time
- Integrated high-pass filter (low-cut switch) to cut low frequency elements from the audio when needed
- Excellent immunity to RF interference from mobile phones and comparable devices
- Mini-microphone, with foam windshield
- Stem microphone can be unplugged during adjournment, easy to maintain
- Hi-Fi loudspeaker, minimal feedback, mutes automatically when microphone is active
- Microphone On/Off button
- Every delegate unit is assigned an individual ID for convenient setup and to avoid double ID forever
- System when operated in stand-alone mode can implement the following facilities:
 - ◆ “ACTIVE MICS”, set the number of delegates permitted to speak at the same time
 - ◆ “OPEN” mode, microphone key with request-to-speak registration (AUTO)
 - ◆ “OVERRIDE” mode, microphone key control with override of the active microphones (FIFO)
 - ◆ “VOICE” mode, microphone activation on speaking
 - ◆ “APPLY” mode, delegate applies to speak by pressing apply key, delegate can speak only when operator or chairman approved his application
 - ◆ “PTT” mode, press microphone On/Off button to talk
- Automatic video tracking, when cooperating with camera and video switcher unit
- Activation at any time (if the amount of active microphones in the system is less than 6, except “VOICE” mode)
- Priority key can switch off or mute the speaking units according to preset
- Approves/denies all delegates' speaking requests
- System supports up to 100 chairman units, while only one chairman unit has the control facilities listed above (set by main unit)

Controls and Indicators

- Uni-directional electret condenser microphone with two-color illuminated ring
- Headphone volume up and down
- Microphone On/Off button with indicator
- Priority key with indicator
- Next key with indicator

Interconnections

- Socket for pluggable stem microphone
- Ø 3.5 mm stereo headphone jack
- 1.5 m cable with 6P-DIN plug
- 0.6 m cable with 6P-DIN socket

Technical Specifications

Electrical

Max. consumption..... 2 W

Headphone connection

Frequency response..... 40 Hz to 16 kHz

Earphone load impedance..... >16 Ohm

Earphone output..... 10 mW

Microphone

Transducer..... Electret-condenser

Polar pattern..... Uni-directional

Sensitivity..... -46 dBV/Pa

Frequency response..... 80 Hz to 18 kHz

Input impedance..... 2 kOhm

Directivity 0°/180°..... > 20 dB (1 kHz)

Equivalent noise..... 20 dBA (SPL)

Maximum sound pressure level..... 125 dB (THD<3%)

Interface data

Connector..... Ø 3.5 mm stereo jack for headphone

Mechanical

Mounting..... Tabletop

Dimensions (h x w x d) (w/o stem microphone)..... 71 x 124 x 138 mm

Weight (incl. stem microphone)..... 0.9 kg

Color..... Champagne (PANTONE 401 C) panel + black (PANTONE 419 C) base / Charcoal gray (PANTONE Cool Gray 11 C) panel + black (PANTONE 419 C) base

Stem length..... 410 mm (standard version),
240 mm, 330 mm, 470 mm

Ordering Information

HCS-3938C_S...Economical Digital Conference System Chairman
Unit (tabletop, champagne panel + black base,
white button)

HCS-3938C_L...Economical Digital Conference System Chairman
Unit (tabletop, champagne panel + black base,
champagne button)

HCS-3938C_G...Economical Digital Conference System Chairman
Unit (tabletop, charcoal gray panel + black base,
green button)

HCS-3938C_D...Economical Digital Conference System Chairman
Unit (tabletop, charcoal gray panel + black base,
charcoal gray button)

HCS-3938CF Chairman Unit



Features

- **Stylish and ergonomic design**
- **Smaller, economical and practical, convenient for transportation**
- **Connection cable is routed from the bottom through the hole in the table for a tidy desktop**
- **Fully digital audio technology**
- **Hi-Fi loudspeaker**
- **Priority key and Next key**
- **Fixed stem microphone**
- **Excellent immunity to RF interference from mobile phones**
- **Supporting “PnP” (plug and play)**

The stylish and ergonomically designed chairman unit has all the necessary facilities to enable the user to chair a conference. It has excellent immunity to RF interference from mobile phones. Similar in appearance to HCS-3938DF Delegate Unit, the HCS-3938CF Chairman Unit includes a microphone priority button. When pressed, the priority button causes all currently active delegate microphones to be switched off temporarily or permanently, allowing the chairman to take control of the meeting. The loudspeaker offers superior acoustics with minimal feedback for enhanced intelligibility.

Functions

- Compliant to IEC 60914
- Gain of each microphone adjustable separately, fitting the individual orator's voice to achieve perfect speech pickup any time
- Integrated high-pass filter (low-cut switch) to cut low frequency elements from the audio when needed
- Excellent immunity to RF interference from mobile phones and comparable devices
- Mini-microphone, with foam windshield
- Hi-Fi loudspeaker, minimal feedback, mutes automatically when microphone is active
- Microphone On/Off button
- Every delegate unit is assigned an individual ID for convenient setup and to avoid double ID forever
- System when operated in stand-alone mode can implement the following facilities:
 - ◆ “ACTIVE MICS”, set the number of delegates permitted to speak at the same time
 - ◆ “OPEN” mode, microphone key with request-to-speak registration (AUTO)
 - ◆ “OVERRIDE” mode, microphone key control with override of the active microphones (FIFO)
 - ◆ “VOICE” mode, microphone activation on speaking
 - ◆ “APPLY” mode, delegate applies to speak by pressing apply key, delegate can speak only when operator or chairman approved his application
 - ◆ “PTT” mode, press microphone On/Off button to talk
- Automatic video tracking, when cooperating with camera and video switcher unit
- Activation at any time (if the amount of active microphones in the system is less than 6, except “VOICE” mode)
- Priority key can switch off or mute the speaking units according to preset
- Approves/denies all delegates' speaking requests
- System supports up to 100 chairman units, while only one chairman unit has the control facilities listed above (set by main unit)

Controls and Indicators

- Uni-directional electret condenser microphone with two-color illuminated ring
- Headphone volume up and down
- Microphone On/Off button with indicator
- Priority key with indicator
- Next key with indicator

Interconnections

- Ø 3.5 mm stereo headphone jack
- 1.5 m cable with 6P-DIN plug
- 0.6 m cable with 6P-DIN socket

Technical Specifications

Electrical

Max. consumption..... 2 W

Headphone connection

Frequency response..... 40 Hz to 16 kHz

Earphone load impedance..... >16 Ohm

Earphone output..... 10 mW

Microphone

Transducer..... Electret-condenser

Polar pattern..... Uni-directional

Sensitivity..... -46 dBV/Pa

Frequency response..... 80 Hz to 18 kHz

Input impedance..... 2 kOhm

Directivity 0°/180°..... > 20 dB (1 kHz)

Equivalent noise..... 20 dBA (SPL)

Maximum sound pressure level..... 125 dB (THD<3%)

Interface data

Connector..... Ø 3.5 mm stereo jack for headphone

Mechanical

Mounting..... Tabletop

Dimensions (h x w x d) (w/o stem microphone)..... 71 x 124 x 138 mm

Weight (incl. stem microphone)..... 0.9 kg

Color..... Champagne (PANTONE 401 C) panel + black (PANTONE 419 C) base / Charcoal gray (PANTONE Cool Gray 11 C) panel + black (PANTONE 419 C) base

Stem length..... 410 mm

Ordering Information

HCS-3938CF_S..... Economical Digital Conference System Chairman Unit (tabletop, champagne panel + black base, white button, fixed gooseneck)

HCS-3938CF_L..... Economical Digital Conference System Chairman Unit (tabletop, champagne panel + black base, champagne button, fixed gooseneck)

HCS-3938CF_G..... Economical Digital Conference System Chairman Unit (tabletop, charcoal gray panel + black base, green button, fixed gooseneck)

HCS-3938CF_D..... Economical Digital Conference System Chairman Unit (tabletop, charcoal gray panel + black base, charcoal gray button, fixed gooseneck)

HCS-3938D Discussion Unit



Features

- Stylish and ergonomic design
- Smaller, economical and practical, convenient for transportation
- Connection cable is routed from the bottom through the hole in the table for a tidy desktop
- Fully digital audio technology
- Hi-Fi loudspeaker
- Pluggable stem microphone
- Excellent immunity to RF interference from mobile phones
- Supporting “PnP” (plug and play)

The delegate unit meets the basic demands of the conferences. It provides facilities for speaking, registering a request-to-speak and listening. It has excellent immunity to RF interference from mobile phones. The loudspeaker offers superior acoustics with minimal feedback for enhanced intelligibility.

Functions

- Compliant to IEC 60914
- Gain of each microphone adjustable separately, fitting the individual orator’s voice to achieve perfect speech pickup any time
- Integrated high-pass filter (low-cut switch) to cut low frequency elements from the audio when needed
- Excellent immunity to RF interference from mobile phones and comparable devices
- Mini-microphone, with foam windshield
- Stem microphone can be unplugged during adjournment, easy to maintain
- Hi-Fi loudspeaker, minimal feedback, mutes automatically when microphone is active
- Microphone On/Off button
- Every delegate unit is assigned an individual ID for convenient setup and to avoid double ID forever

- System when operated in stand-alone mode can implement the following facilities:
 - ◆ “ACTIVE MICS”, set the number of delegates permitted to speak at the same time
 - ◆ “OPEN” mode, microphone key with request-to-speak registration (AUTO)
 - ◆ “OVERRIDE” mode, microphone key control with override of the active microphones (FIFO)
 - ◆ “VOICE” mode, microphone activation on speaking
 - ◆ “APPLY” mode, delegate applies to speak by pressing apply key, delegate can speak only when operator or chairman approved his application
 - ◆ “PTT” mode, press microphone On/Off button to talk
- Automatic video tracking, when cooperating with camera and video switcher unit
- Set any delegate unit to be VIP unit
 - ◆ Up to 32 units can be set as VIP in one system via application software
 - ◆ VIP unit can be activated as long as the total of active microphones is not beyond 6 (incl. chairman/delegate/VIP unit, except “VOICE” mode)

Controls and Indicators

- Uni-directional electret condenser microphone with two-color illuminated ring
- Headphone volume up and down
- Microphone On/Off button with indicator

Interconnections

- Socket for pluggable stem microphone
- Ø 3.5 mm stereo headphone jack
- 1.5 m cable with 6P-DIN plug
- 0.6 m cable with 6P-DIN socket

Technical Specifications

Electrical

Max. consumption..... 2 W

Headphone connection

Frequency response..... 40 Hz to 16 kHz

Earphone load impedance..... >16 Ohm

Earphone output..... 10 mW

Microphone

Transducer..... Electret-condenser

Polar pattern..... Uni-directional

Sensitivity..... -46 dBV/Pa

Frequency response..... 80 Hz to 18 kHz

Input impedance..... 2 kOhm

Directivity 0°/180°..... > 20 dB (1 kHz)

Equivalent noise..... 20 dBA (SPL)

Maximum sound pressure level..... 125 dB (THD<3%)

Interface data

Connector..... Ø 3.5 mm stereo jack for headphone

Mechanical

Mounting..... Tabletop
 Dimensions (h x w x d) (w/o stem microphone)...71 x 124 x 138 mm
 Weight (incl. stem microphone)..... 0.9 kg
 Color... Champagne (PANTONE 401 C) panel + black (PANTONE 419 C) base / Charcoal gray (PANTONE Cool Gray 11 C) panel + black (PANTONE 419 C) base
 Stem length..... 410 mm (standard version), 240 mm, 330 mm, 470 mm

Ordering Information

- HCS-3938D_S...Economical Digital Conference System Delegate Unit (tabletop, champagne panel + black base, white button)
- HCS-3938D_L...Economical Digital Conference System Delegate Unit (tabletop, champagne panel + black base, champagne button)
- HCS-3938D_G...Economical Digital Conference System Delegate Unit (tabletop, charcoal gray panel + black base, green button)
- HCS-3938D_D...Economical Digital Conference System Delegate Unit (tabletop, charcoal gray panel + black base, charcoal gray button)

HCS-3938DF Discussion Unit



Features

- Stylish and ergonomic design
- Smaller, economical and practical, convenient for transportation
- Connection cable is routed from the bottom through the hole in the table for a tidy desktop
- Fully digital audio technology
- Hi-Fi loudspeaker
- Fixed stem microphone
- Excellent immunity to RF interference from mobile phones
- Supporting “PnP” (plug and play)

The delegate unit meets the basic demands of the conferences. It provides facilities for speaking, registering a request-to-speak and listening. It has excellent immunity to RF interference from mobile phones. The loudspeaker offers superior acoustics with minimal feedback for enhanced intelligibility.

Functions

- Compliant to IEC 60914
- Gain of each microphone adjustable separately, fitting the individual orator’s voice to achieve perfect speech pickup any time
- Integrated high-pass filter (low-cut switch) to cut low frequency elements from the audio when needed
- Excellent immunity to RF interference from mobile phones and comparable devices
- Mini-microphone, with foam windshield
- Hi-Fi loudspeaker, minimal feedback, mutes automatically when microphone is active
- Microphone On/Off button
- Every delegate unit is assigned an individual ID for convenient setup and to avoid double ID forever

- System when operated in stand-alone mode can implement the following facilities:
 - ◆ “ACTIVE MICS”, set the number of delegates permitted to speak at the same time
 - ◆ “OPEN” mode, microphone key with request-to-speak registration (AUTO)
 - ◆ “OVERRIDE” mode, microphone key control with override of the active microphones (FIFO)
 - ◆ “VOICE” mode, microphone activation on speaking
 - ◆ “APPLY” mode, delegate applies to speak by pressing apply key, delegate can speak only when operator or chairman approved his application
 - ◆ “PTT” mode, press microphone On/Off button to talk
- Automatic video tracking, when cooperating with camera and video switcher unit
- Set any delegate unit to be VIP unit
 - ◆ Up to 32 units can be set as VIP in one system via application software
 - ◆ VIP unit can be activated as long as the total of active microphones is not beyond 6 (incl. chairman/delegate/VIP unit, except “VOICE” mode)

Controls and Indicators

- Uni-directional electret condenser microphone with two-color illuminated ring
- Headphone volume up and down
- Microphone On/Off button with indicator

Interconnections

- Ø 3.5 mm stereo headphone jack
- 1.5 m cable with 6P-DIN plug
- 0.6 m cable with 6P-DIN socket

Technical Specifications

Electrical

Max. consumption..... 2 W

Headphone connection

Frequency response.....40 Hz to 16 kHz

Earphone load impedance.....>16 Ohm

Earphone output.....10 mW

Microphone

Transducer.....Electret-condenser

Polar pattern.....Uni-directional

Sensitivity.....-46 dBV/Pa

Frequency response.....80 Hz to 18 kHz

Input impedance.....2 kOhm

Directivity 0°/180°.....> 20 dB (1 kHz)

Equivalent noise.....20 dBA (SPL)

Maximum sound pressure level.....125 dB (THD<3%)

Interface data

Connector.....Ø 3.5 mm stereo jack for headphone

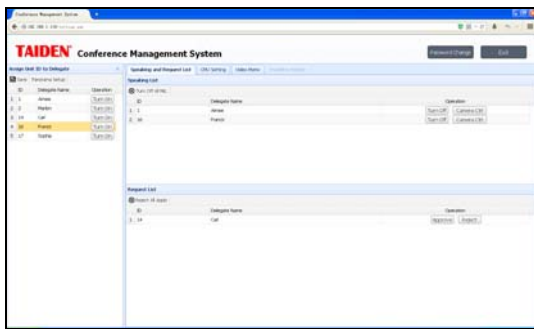
Mechanical

Mounting..... Tabletop
 Dimensions (h x w x d) (w/o stem microphone)...71 x 124 x 138 mm
 Weight (incl. stem microphone)..... 0.9 kg
 Color... Champagne (PANTONE 401 C) panel + black (PANTONE 419 C) base / Charcoal gray (PANTONE Cool Gray 11 C) panel + black (PANTONE 419 C) base
 Stem length..... 410 mm

Ordering Information

HCS-3938DF_S..... Economical Digital Conference System Delegate Unit (tabletop, champagne panel + black base, white button, fixed gooseneck)
 HCS-3938DF_L..... Economical Digital Conference System Delegate Unit (tabletop, champagne panel + black base, champagne button, fixed gooseneck)
 HCS-3938DF_G..... Economical Digital Conference System Delegate Unit (tabletop, charcoal gray panel + black base, green button, fixed gooseneck)
 HCS-3938DF_D..... Economical Digital Conference System Delegate Unit (tabletop, charcoal gray panel + black base, charcoal gray button, fixed gooseneck)

HCS-3900MA Conference Main Unit



Web Control Page

Functions

- Economical and practical, designed for small and medium-sized conference rooms
- Compliant to IEC 60914
- Fully digital conference main unit, audio signals processed by high performance DSP
- Conference audio recording and playback
- With built-in monitor loudspeaker, can be directly employed in small and medium-sized meeting rooms without amplification system
- Every conference unit is assigned an individual ID for convenient setup and to avoid double ID allocation forever
- Set any delegate unit to be VIP unit, VIP unit can be activated as long as the total of active microphones is not beyond 6 (incl. chairman/delegate/VIP unit, except "VOICE" mode)
- Up to 255 contribution units can be connected by adding HCS-3900ME extension unit
- System when operated in stand-alone mode can implement the following facilities:
 - ◆ "ACTIVE MICS", set the number of delegates permitted to speak at the same time
 - ◆ Speaking time limit can be set up (1-240 minutes)
 - ◆ "OPEN" mode, microphone key with request-to-speak registration (AUTO)
 - ◆ "OVERRIDE" mode, microphone key control with override of the active microphones (FIFO)
 - ◆ "VOICE" mode, microphone activation on speaking
 - ◆ "APPLY" mode, delegate applies to speak by pressing apply key, delegate can speak only when operator or chairman approved his application
 - ◆ "PTT" mode, press microphone On/Off button to talk

- With web page control function, the user can access the IP address of main unit from web browser to handle meeting management
- Automatic video tracking, when cooperating with camera and video switcher unit
- Built-in unit detection facilities, detect the unit's LED before the meeting

Controls and Indicators

- 256×64 OLED displays the status and the menu of system configuration
- Four buttons for configuration
- Power switch with indicator
- Line in volume control buttons
- Master volume control buttons
- Earphone volume control buttons

Interconnections

- Multiple audio in/out interfaces:
 - ◆ One balanced XLR-type connector for audio line in
 - ◆ Two symmetrical RCA input interfaces for audio line in
 - ◆ One balanced XLRM-type connector for audio line out
 - ◆ Two symmetrical RCA output interfaces for audio line out
 - ◆ One USB interface and one SD card slot for conference audio recording and playback. The recording will switch to the other device when SD card or USB stick is full without interruption
- One RS-232 port for connection to central control system
- Video switcher interface
- 2×outlet (6P-DIN) trunk-line cable outlets
- One USB interface for system upgrading
- Ethernet interface (RJ45)

Technical Specifications

Electrical

Frequency response.....	40 Hz to 16 kHz
SNR.....	>90 dBA
Dynamic range.....	>94 dB
THD.....	<0.05%
Power supply.....	AC 100 V-120 V 60 Hz or AC 220 V-240 V 50 Hz
Power consumption.....	152 W
RS-232 connection.....	nine-pole Sub-D female socket

Audio inputs

LINE IN 1.....	+18 dBu, BAL.
LINE IN 2.....	+18 dBu, UNBAL.

Audio outputs

LINE OUT 1.....	+18 dBu, BAL.
LINE OUT 2.....	+18 dBu, UNBAL.

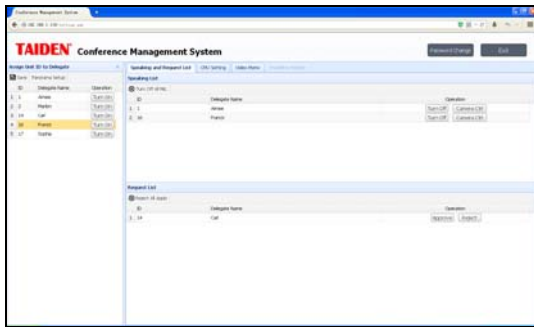
Mechanical

Mounting.....Tabletop
Dimensions (h x w x d).....74 x 430 x 116 mm
Weight.....2.3 kg
Color.....Black (PANTONE 419 C)

Ordering Information

HCS-3900MA___Economical Digital Conference System Main Unit
(discussion, recording, 256×64 OLED, 6P
sockets)

HCS-3900MB Conference Main Unit



Web Control Page

Functions

- Economical and practical, designed for small and medium-sized conference rooms
- Compliant to IEC 60914
- Fully digital conference main unit, audio signals processed by high performance DSP
- With built-in monitor loudspeaker, can be directly employed in small and medium-sized meeting rooms without amplification system
- Every conference unit is assigned an individual ID for convenient setup and to avoid double ID allocation forever
- Set any delegate unit to be VIP unit, VIP unit can be activated as long as the total of active microphones is not beyond 6 (incl. chairman/delegate/VIP unit, except "VOICE" mode)
- Up to 255 contribution units can be connected by adding HCS-3900ME extension unit
- System when operated in stand-alone mode can implement the following facilities:
 - ◆ "ACTIVE MICS", set the number of delegates permitted to speak at the same time
 - ◆ Speaking time limit can be set up (1-240 minutes)
 - ◆ "OPEN" mode, microphone key with request-to-speak registration (AUTO)
 - ◆ "OVERRIDE" mode, microphone key control with override of the active microphones (FIFO)
 - ◆ "VOICE" mode, microphone activation on speaking
 - ◆ "APPLY" mode, delegate applies to speak by pressing apply key, delegate can speak only when operator or chairman approved his application
 - ◆ "PTT" mode, press microphone On/Off button to talk

- With web page control function, the user can access the IP address of main unit from web browser to handle meeting management
- Automatic video tracking, when cooperating with camera and video switcher unit
- Built-in unit detection facilities, detect the unit's LED before the meeting

Controls and Indicators

- 256×64 OLED displays the status and the menu of system configuration
- Four buttons for configuration
- Power switch with indicator
- Line in volume control buttons
- Master volume control buttons
- Earphone volume control buttons

Interconnections

- Multiple audio in/out interfaces:
 - ◆ One balanced XLR-type connector for audio line in
 - ◆ Two symmetrical RCA input interfaces for audio line in
 - ◆ One balanced XLRM-type connector for audio line out
 - ◆ Two symmetrical RCA output interfaces for audio line out
- One RS-232 port for connection to central control system
- Video switcher interface
- 2×outlet (6P-DIN) trunk-line cable outlets
- One USB interface for system upgrading
- Ethernet interface (RJ45)

Technical Specifications

Electrical

Frequency response.....	40 Hz to 16 kHz
SNR.....	>90 dBA
Dynamic range.....	>94 dB
THD.....	<0.05%
Power supply.....	AC 100 V-120 V 60 Hz or AC 220 V-240 V 50 Hz
Power consumption.....	152 W
RS-232 connection.....	nine-pole Sub-D female socket

Audio inputs

LINE IN 1.....	+18 dBu, BAL.
LINE IN 2.....	+18 dBu, UNBAL.

Audio outputs

LINE OUT 1.....	+18 dBu, BAL.
LINE OUT 2.....	+18 dBu, UNBAL.

Mechanical

Mounting.....	Tabletop
Dimensions (h x w x d).....	74 x 430 x 116 mm
Weight.....	2.3 kg
Color.....	Black (PANTONE 419 C)

HCS-3900ME Conference Extension Main Unit



Functions

- Compliant to IEC 60914
- Cooperates with HCS-3900M series Conference Main Unit for system capacity extension
- Sync power on/off with the Conference Main Unit

Interconnections

- 3 × 6P-DIN trunk-line cable outlet, connection cable length should be less than 80 meters
- 1 × 6P-DIN socket (input) for connection with the Conference Main Unit or with a preceding HCS-3900ME, connection cable length should be less than 80 meters
- 1 × 6P-DIN socket (output) for connection with the next HCS-3900ME, connection cable length should be less than 80 meters

Technical Specifications

Electrical

Power supply.....AC 100 V - 240 V, 50 Hz / 60 Hz
 Power consumption.....150 W

Mechanical

Dimensions (h × w × d).....42 × 296 × 133 mm
 Weight.....1.5 kg
 Color.....Black (PANTONE 419 C)

Ordering Information

HCS-3900ME.....Economical Digital Conference System
 Extension Unit (6P sockets)

Quick lookup table of HCS-3900M CMU/EMU load capability (unit: piece)

Type No.	The extension cable length between the CMU(EMU) and the first Congress Unit connected to the socket			
	20 m	40 m	60 m	80 m
HCS-3900MA	25	23	22	21
HCS-3900MB	25	23	22	21
HCS-3900ME	18	16	14	12