



DCN-SW Conference Software Main Module



- ▶ Meeting & Agenda
- ▶ User management
- ▶ Client server solution
- ▶ Optimized for Microsoft Vista
- ▶ Off-line configuration
- ▶ Multi PC
- ▶ Supports DCN Next Generation or DCN Wireless Discussion System
- ▶ On-screen help facility

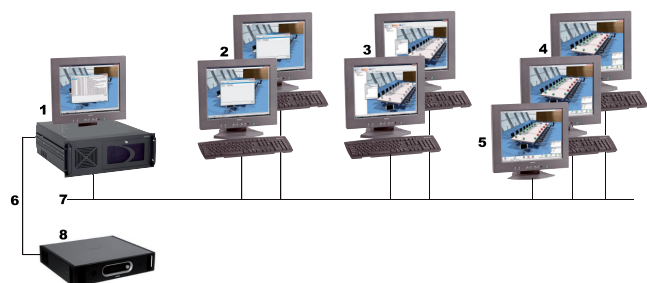
The DCN-SW Conference Software Main Module is used as a platform on which all other software modules run. Basic functions are included where others can be added depending on the functionality required.

System Overview

The DCN-SW Conference Software Main Module is build as a client server solution and consists of four software components:

- The server provides management, control and monitoring of the DCN Next Generation System ¹ or DCN Wireless Discussion system.
- The configuration application provides system installation and meeting preparation.
- The operator application provides system monitoring and meeting control.
- The print application provides printing of voting results. ¹ Only single CCU (Central Control Unit)

All DCN-SW applications can, but not necessary need to be run on separate computers and integrate seamlessly with each other. This allows the possibility for assigning functionality to different users and/or PCs – for instance, let one or more users configure the set-up and register delegates (configuration application), and another person actually control the meeting on a separate pc (operator application). Contextual help file provides instant support for all applications.



- | | |
|---|---|
| 1 | DCN-SW Server |
| 2 | Vote results print application |
| 3 | Remote Configuration application |
| 4 | Remote Operator application (Multi PC license required) |
| 5 | Touch screen |
| 6 | RS232 connection |
| 7 | Ethernet connections |
| 8 | Single CCU (Central Control Unit) |

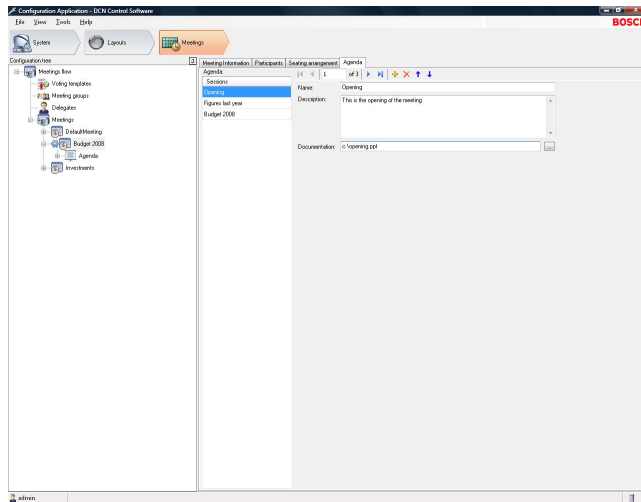
Functions

The server

- Monitor and control of the conference data.
- It runs on the background and links all applications.
- SQL database stores all data and settings.
- Status report of database connection and system connection.

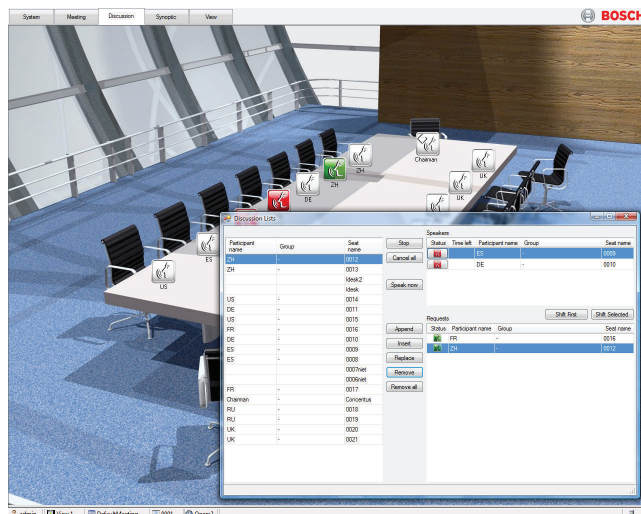
- Error logging for quick diagnostics

Configuration application



- Easy step-by-step pre-configuration which makes
- Exceptionally ergonomic
- Off-line system configuration
- Administrator user management: defining users and
- User groups with group privileges like view- and control
- rights
- Installer system setup: defining seats and synoptic
- layouts
- Operator meeting preparation: voting templates,
- participating delegates, authorizations for each
- meeting, the agenda, lists of speakers and voting
- scripts

Operator application



- Full meeting control
- Touch screen optimized
- Ribbon technology giving the user a graphical
- representation of all main functions, which makes it
- very intuitive to use
- functionality depending on user rights and system
- license

- Synoptic microphone control, voting results, individual
- microphone sensitivity control, battery status and
- signal status
- Ergonomically designed synoptic shapes and shadings
- help the color-impaired people to distinguish different
- statuses
- Quick-links to jump instantaneously to configuration
- application to make adjustment to the
- pre-configuration

Print application

- Automatic printing of voting results

Installation/Configuration Notes

Licenses

DCN-SW is license activated and comes with a authorization code which includes synoptic control with basic microphone control functionality. Activation is done via the license website.

The configuration application can be used independent of the additional licenses as where the operator application does need the license to control the conference system.

Running the operator application on a separate PC requires DCN-SWMHPC.

Parts Included

Quantity	Component
1	DVD includes
	DCN-SW Conference Software Main module
	Authorization code including synoptic control
	setup wizard that can selectively install all components (Server-, Configuration-, Operator- and Print-application) in all supported languages

Technical Specifications

Maximum number of client PCs	24
Supported operating system	Windows Vista Home Premium (32 or 64 bits) or above
	Windows XP Professional (32 or 64 bits) Service Pack 2 and .Net Framework 2.0 SP2
Required open TCP port for client PC	9461

Ordering Information

DCN-SW Conference Software Main Module **DCN-SW**
 used as a platform on which all other software
 modules run

Software Options

DCN-SWPV Conference Software **DCN-SWPV**
Parliamentary Voting
 can only be used in combination with DCN-SW
 DCN-SWDB is required if individual vote re-
 sults are required

DCN-SWDB Conference Software Delegate **DCN-SWDB**
Database
 can only be used in combination with DCN-SW

DCN-SWMM Conference Software **DCN-SWMM**
Microphone Management
 can only be used in combination with DCN-SW

DCN-SWMPG Conference Software Multi **DCN-SWMPG**
PG
 can only be used in combination with DCN-SW